



Diamond Door Products LTD

Commercial Entry Door System For PowerLift Hydraulic Doors

This preassembled door system was designed for use into hangar, large roll-up, and hydraulic doors. Frames and doors are made to commercial specifications so are much more durable than similar agricultural or residential type doors other use. Fully welded frame construction.

Features:

- 20 gauge A40 galvanealed doors—polystyrene insulated core, smooth or textured skin, finish painted
- 16 gauge A40 galvanealed frames—2 1/4" type profile, finish painted
- Baked-on finish coat paint—white color
- Grade 2 Stainless steel lever lock
- Wide variety of hardware items—from value to high end architectural
- 3068 & 3070 are standard sizes—but any size can be manufactured in very short lead times
- Beveled door edge for tighter fit
- (3) 4 1/2" x 4 1/2" BB NRP Hinges
- Full perimeter urethane weatherseal
- Reversible

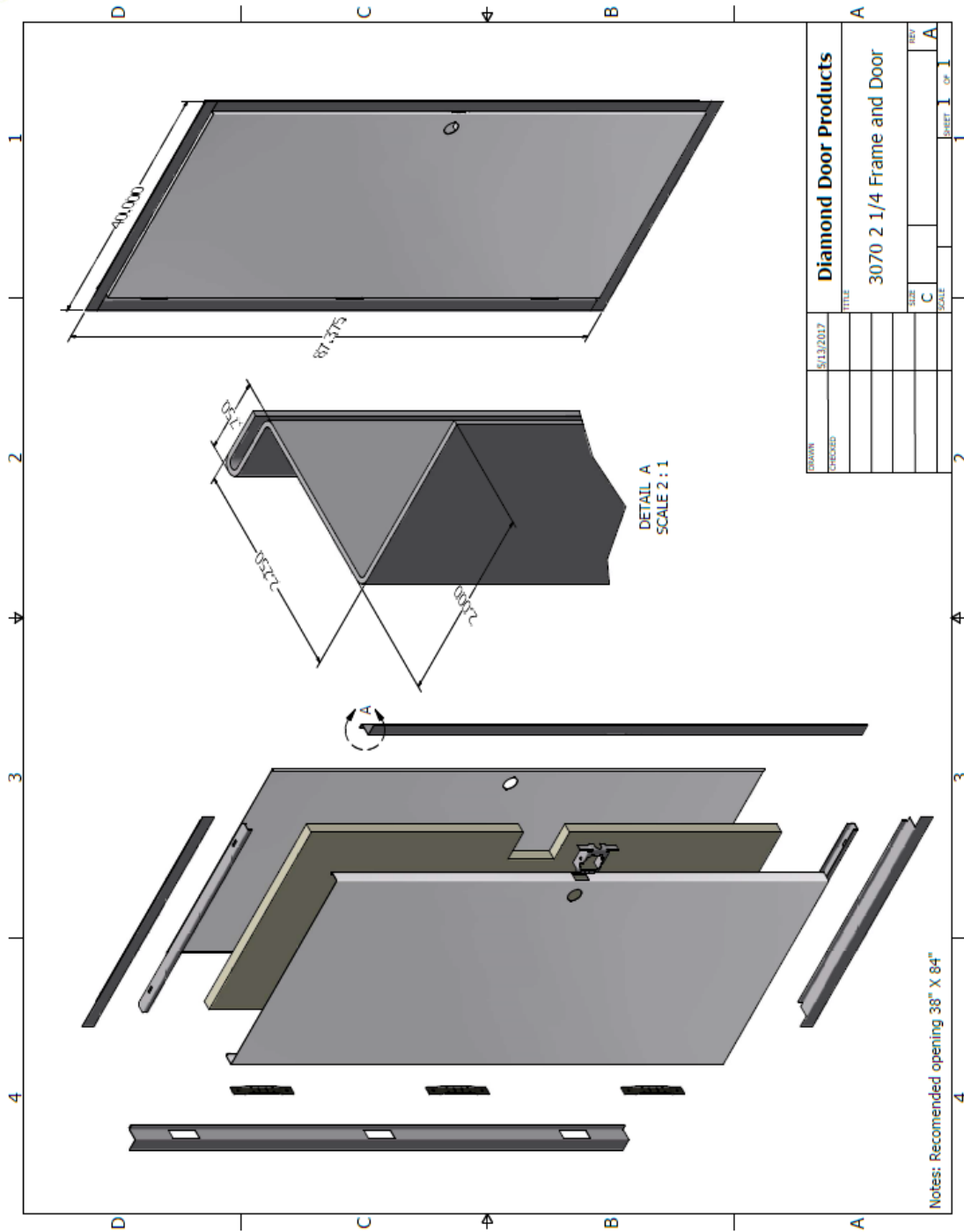
Benefits:

- Pocket door type design makes for simple installation and labor savings
- Commercial door, frame and hardware components provide for long term durability
- Corrugated and shrink wrapped packaging—wood skid base
- Lite kits are installed and include the glass
- Greater in-place value than KD doors





Diamond Door Products LTD



Diamond Door Products
 Phone: 574-293-4816
 Fax: 574-295-1048
 E-mail: tgranitz@diamonddoorproducts.com